

Ground Floor

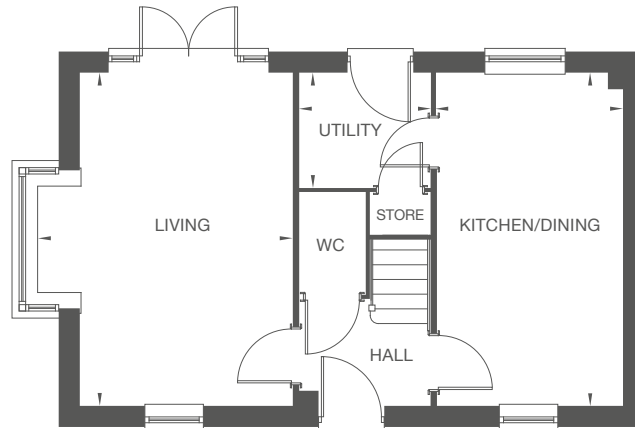
Kitchen/Dining	2.85m x 5.14m 9' 4" x 16' 11"
Living	3.97m max. x 5.14m max. 13' 0" max. x 16' 11" max.
Utility	2.00m x 1.75m 6' 7" x 5' 9"
Car Port	3.07m x 6.09m 10' 1" x 20' 0"

First Floor

Bedroom 1	2.89m max. x 5.14m max. 9' 6" max. x 16' 11" max.
En Suite	1.86m max. x 1.43m max. 6' 1" max. x 4' 8" max.
Bedroom 2	3.30m x 2.99m 10' 10" x 9' 10"
Bedroom 3	3.30m max. x 2.04m max. 10' 10" max. x 6' 9" max.
Bathroom	2.02m x 1.71m 6' 7" x 5' 7"

Total Area = 87.33m² 940 ft²

Ground Floor



First Floor

